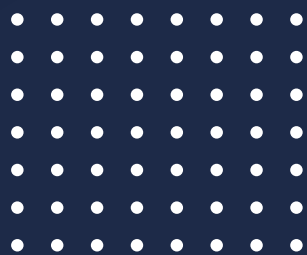


MORE THAN  
**20 YEARS**  
OF EXPERIENCE



# FIRE ALARM DEVICES

---



POLISH  
MANUFACTURER

---

# W2 FIRE ALARM DEVICES

The main task of fire alarm devices is to emit signals about a fire risk and to warn building users about the possible danger. Signaling can be performed in the form of acoustic and optical signals. In order to increase the alarm efficiency, voice signaling devices (with voice messages) can also be used. The signaling devices produced by W2 have Certificates of Constancy of Performance and Certificates of Approval issued by CNBOP-PIB.



## SAOZ-PK2

**SOUNDER WITH VISUAL ALARM DEVICE, OUTDOOR (COMPLIANT WITH EN 54-3, EN 54-23)**

### MAIN FEATURES:

Sound pressure level >110 dB @ 1m

4 sound patterns

Current consumption <100 mA (24 V DC)

Option to build a network of signaling devices working synchronously (acoustical and optical part)

Volume adjustment (two-stage, micro switch)

Available in 3 varieties: red light, white light, red and white light alternately

### COOPERATING PRODUCTS:



PIP-3AN/O,75A



WSD-1



## SA-K5, SA-K6, SA-K7

**SOUNDER, INDOOR (COMPLIANT WITH EN 54-3)**

### MAIN FEATURES:

Sound pressure level >100 dB @ 1m

4 sound patterns

Current consumption <50 mA (24 V DC)

Activation indicator:  
SA-K6 – one LED diode,  
SA-K7 – several LED diodes

### COOPERATING PRODUCTS:



OM-1



WSD-1



PIP-1AN/O,375A



OZ-40-2



## SA-K5N

**SOUNDER, INDOOR (COMPLIANT WITH EN 54-3)**

### MAIN FEATURES:

Sound pressure level >100 dB @ 1m

4 sound patterns

Current consumption <20 mA (24 V DC)

Option to build a network of signaling devices working synchronously

Volume adjustment (built in potentiometer)

Option of linear volume increase

### COOPERATING PRODUCTS:



OM-1



WSD-1



PIP-1AN/O,375A  
OR PIP-3AN/O,75A



OZ-40-2



## SGO-Pgw

**VOICE SOUNDER  
WITH VISUAL ALARM  
DEVICE, INDOOR  
(COMPLIANT WITH  
EN 54-3, EN 54-23)**

### MAIN FEATURES:

Sound pressure level >90 dB @ 1m

18 sound patterns

3 voice messages

Current consumption  
<300 mA (24 V DC)

Option to build a network  
of signaling devices working  
synchronously (acoustical and  
optical part)

Volume adjustment (potentiometer)

Available in 4 varieties: SGO-PgwA,  
SGO-PgwB, SGO-PgwA/śb,  
SGO-PgwB/śb

### COOPERATING PRODUCTS:



OM-1



WSD-1



PIP-3AN/O,75A



OZ-50-3



## SG-Pgw3

**VOICE SOUNDER, INDOOR  
(COMPLIANT WITH EN 54-3)**

### MAIN FEATURES:

Sound pressure level >90 dB @ 1m

18 sound patterns

3 voice messages

Current consumption  
<220 mA (24 V DC)

Option to build a network  
of signaling devices working  
synchronously

Volume adjustment (potentiometer)

### COOPERATING PRODUCTS:



OM-1



WSD-1



PIP-3AN/O,75A



OZ-40-2



## SA-K7N

**SOUNDER WITH  
VISUAL ALARM DEVICE, INDOOR  
(COMPLIANT WITH  
EN 54-3, EN 54-23)**

### MAIN FEATURES:

Sound pressure level >100 dB @ 1m

16 sound patterns

Current consumption (Depending  
on the variety) 75-110 mA (24 V DC)

Option to build a network of  
signaling devices working  
synchronously (acoustical and  
optical part)

Volume adjustment (potentiometer)

Option of linear volume increase

Available in 3 varieties:  
SA-K7N/3m, SA-K7N/6m,  
SA-K7N/9m

### COOPERATING PRODUCTS:



OM-1



WSD-1



PIP-1AN/O,375A  
OR PIP-3AN/O,75A



OZ-50-3



## SO-Pd13

VISUAL ALARM DEVICE, INDOOR  
(COMPLIANT WITH EN 54-23)

### MAIN FEATURES:

Current consumption (Depending on the variety) 38-85 mA (24 V DC)

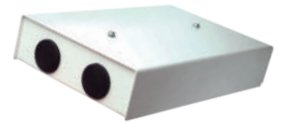
Option to build a network of signaling devices working synchronously (version with synchronization module)

Available in 6 varieties:  
SO-Pd13/3m, SO-Pd13/6m,  
SO-Pd13/9m, SO-Pd13/3m/s,  
SO-Pd13/6m/s, SO-Pd13/9m/s

### COOPERATING PRODUCTS:



PIP-1AN/0,375A



FS-1



OM-2



OZ-50-1  
OR OZ-50-2



## \* SO-Pd11

OPTICAL, INDOOR

### MAIN FEATURES:

Current consumption  
<60 mA (24 V DC)

4 lighting effects

Option to turn on continuous light

**\*device does not have  
a CPR Certificate**

### COOPERATING PRODUCTS:



PIP-3AN/0,75A



OZ-40-2



## \* SO-Pd12

OPTICAL, INDOOR

### MAIN FEATURES:

Current consumption  
<150 mA (24 V DC)

15 lighting effects

Option to turn on continuous light

**\*device does not have  
a CPR Certificate**

### COOPERATING PRODUCTS:



PIP-3AN/0,75A

**NEW**



**POŻAR**

## **SGO-Pgz3**

**VOICE SOUNDER WITH  
VISUAL ALARM DEVICE, OUTDOOR  
(COMPLIANT WITH  
EN 54-3, EN 54-23)**

### **MAIN FEATURES:**

Sound pressure level >100 dB @ 1m

18 sound patterns

Current consumption  
<1100 mA (24 V DC)

Volume control (potentiometer)

Option to build a network of  
signaling devices working  
synchronously (acoustical and  
optical part)

Available in 3 varieties:  
SGO-Pgz3, SGO-Pgz3/śb,  
SGO-Pgz3/śbcz

### **COOPERATING PRODUCTS:**

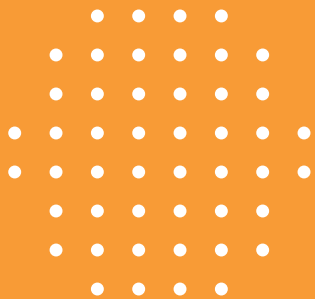


**PIP-3AN/1,25A**



**WSD-1**





## HEADQUARTERS

---



## CONTACT

 [www.w2.com.pl](http://www.w2.com.pl)

 +48 52 345 45 00

 [zamowienia@w2.com.pl](mailto:zamowienia@w2.com.pl)

 ul. Ceramiczna 1A, 86-005 Kruszyn Krajeński, POLAND

