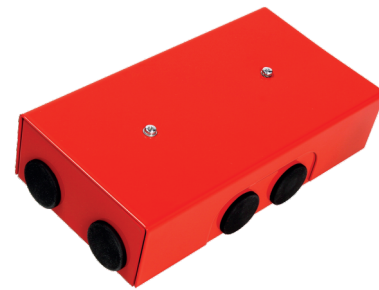


# ▶ CABLE DISTRIBUTION JUNCTION BOX PIP-5A



## DOCUMENTS ISSUED BY CNBOP-PIB:

- THE NATIONAL CERTIFICATE OF CONSTANCY OF PERFORMANCE
- NATIONAL TECHNICAL ASSESSMENT



## ▶ Technical data: \_\_\_\_\_

Supply voltage	max. 400 V AC
Current range	max. 16 A
External diameter of a cable	max. $\varnothing$ 16 mm
Max. conductor cross-section	max. 4 mm <sup>2</sup>
Ingress protection	IP20
Dimensions	174x91x47 mm
Weight	~625 g

## ▶ Product description: \_\_\_\_\_

- PIP-5A junction box is a distribution junction box featuring E60, E90 electrical function maintenance class.
- The PIP-5A enables branching of 5-core leads having 4 mm<sup>2</sup> maximum cross-sectional area.
- The main intended use of the junction box is connecting supply and synchronising leads for actuators of smoke flaps.
- Its structure enables in practice connection of arbitrary number of actuators. The only limitation is cross-sectional area of supply cord and current-carrying capacity, of max 16 A.

## ▶ Connection diagram: \_\_\_\_\_

Version	Electric diagram	Box inside
PIP-5A	<p>Connection diagram 1</p>	
	<p>Connection diagram 2</p>	